

Installation and Operating Manual

2-Wire Audio Intercom
Model: PIGEON



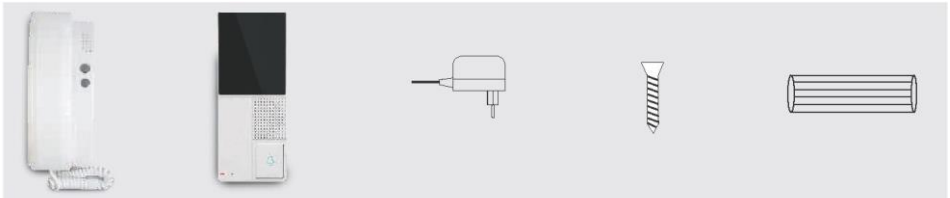
CONTENTS

Features	1
Package Contents.....	1
Safety Instruction.....	1
System Installation	2
Technical Specifications	4
Troubleshooting	4

Features

- Used as duplex doorphone as well as inner intercom.
- Clear intercom without noise.
- The talking distance is less than 150m.
- 2 wires for connecting all the units.
- Electronic-lock release function.
- The outdoor unit meets IP44 water-proof standards.
- Three different chimes for option.

Package Contents



• Indoor

• Outdoor

• 1 x Adapter

4 x Screws

• 4 x Silicone
Cap

Safety Instruction

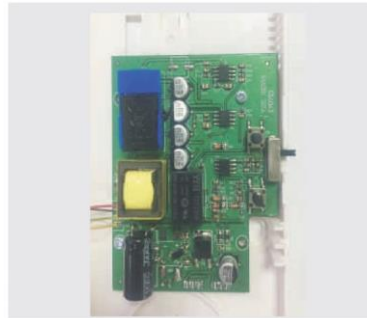
- Keep the indoor unit away from high temperatures, such as near an oven or in direct sunlight, and high humidity, such as bathrooms and greenhouses.
- Do not place it near magnetic field and electric devices.
- Do not expose to direct sunlight, mount in a place protected from precipitation.
- Do not subject either the indoor or outdoor units to sudden shocks, such as being struck or dropped.
- Never attempt to disassemble the device, leave repair to a professional.
- Disconnect supply voltage if the device is left unused for a longer period of time.

Caution

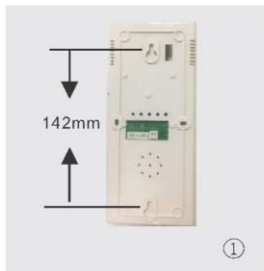
1. To prevent damage, the unit should be fastened on the wall according to instruction.
2. Power plug as disconnecting device should be kept easy to operate.

System Installation

A. Indoor Unit



① Drill proper holes in the wall according to the distance on the back shell of the indoor unit, plug up the screw holes with silicone caps and then screws..



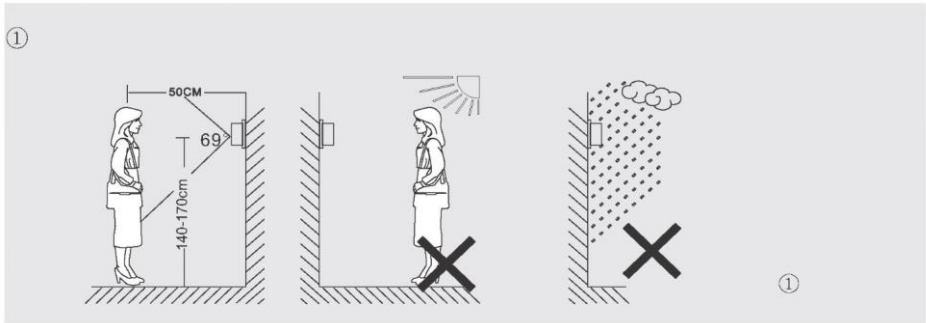
② Use RVV4×0.3mm² cables. Connect the wiring terminals L1, L2 of indoor unit with wiring terminals 1、2 of outdoor unit respectively.

The wiring terminals "LOCK+ , GND" of indoor unit are connected with electric lock through RVV2X1.0mm². Connect the Power output plug to the power jack " " of indoor unit. Please refer to the wiring diagram.

③ Hang the headset on the wall.

④ Plug the power adapter into the sockets of AC power, then the system can work.

B. Outdoor unit (with rain shade)

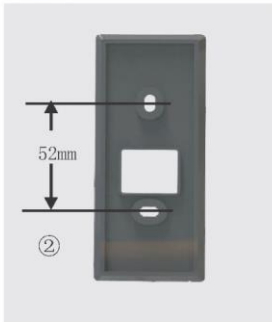


②. Drill proper holes in the wall, plug up the screw holes with silicone caps.

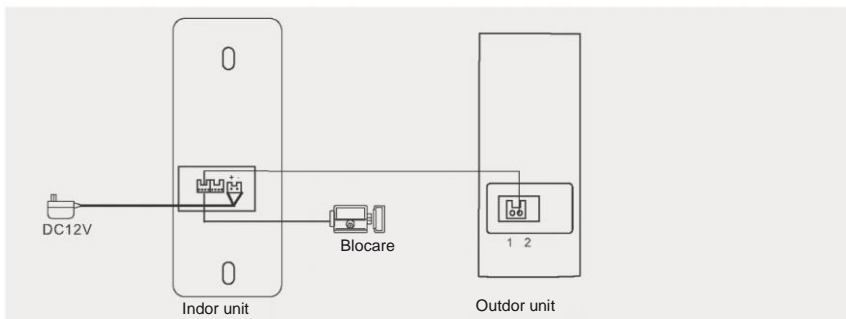
Fasten the rain cover on the wall with screws.

③. Refer to the wiring diagram to do the wire connection.

④. Fix the outdoor unit on the rain cover with screws.



C. Wiring diagram

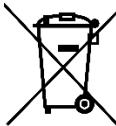


Technical Specifications

Input Voltage	AC100~240V 50/60Hz
Adapter Output	DC12V 1A
Power Consumption	Static state <1 W Working state <2 W
Audio Anti-distortion Power	<20mW
Frequency Response	1K~5KHz
Operating Temperature	-20°C~+50°C
Relative Humidity	10%~90% RH
Outline Size : mm(outdoor unit)	L115 x W47 x H30mm

Troubleshooting

Problem	Solutions
No sound or hard to hear the visitor	<ul style="list-style-type: none"> • Make sure the doorphone handsets are plugged into the doorphone intercom. • Make sure the doorphones are connected to the power supply and the power supply is switched on. • Make sure the indoor units are properly connected to the outdoor unit. And the wires are connected to the correct terminals. • Make sure the connecting wires from the indoor units are properly connected to the terminal block
The door is not unlocked when you press the door unlock button	<ul style="list-style-type: none"> • Make sure the wiring to the electronic lock is wired correctly and that the wires are properly attached.



Waste electrical and electronic equipment are a special waste category, collection, storage, transport, treatment and recycling are important because they can avoid environmental pollution and are harmful to health. Submitting waste electrical and electronic equipment to special collection centers makes the waste to be recycled properly and protecting the environment. Do not forget! Each electric appliance that arrives at the landfill, the field, pollutes the environment!



Importer & distributor:

SC VITACOM ELECTRONICS SRL

CIF: RO 214527

Tel. 0264-438401*

sales@vitacom.ro, www.vitacom.ro